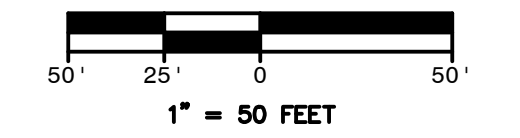
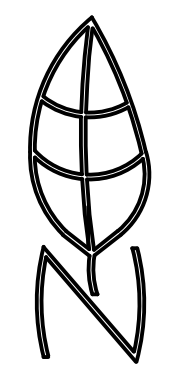
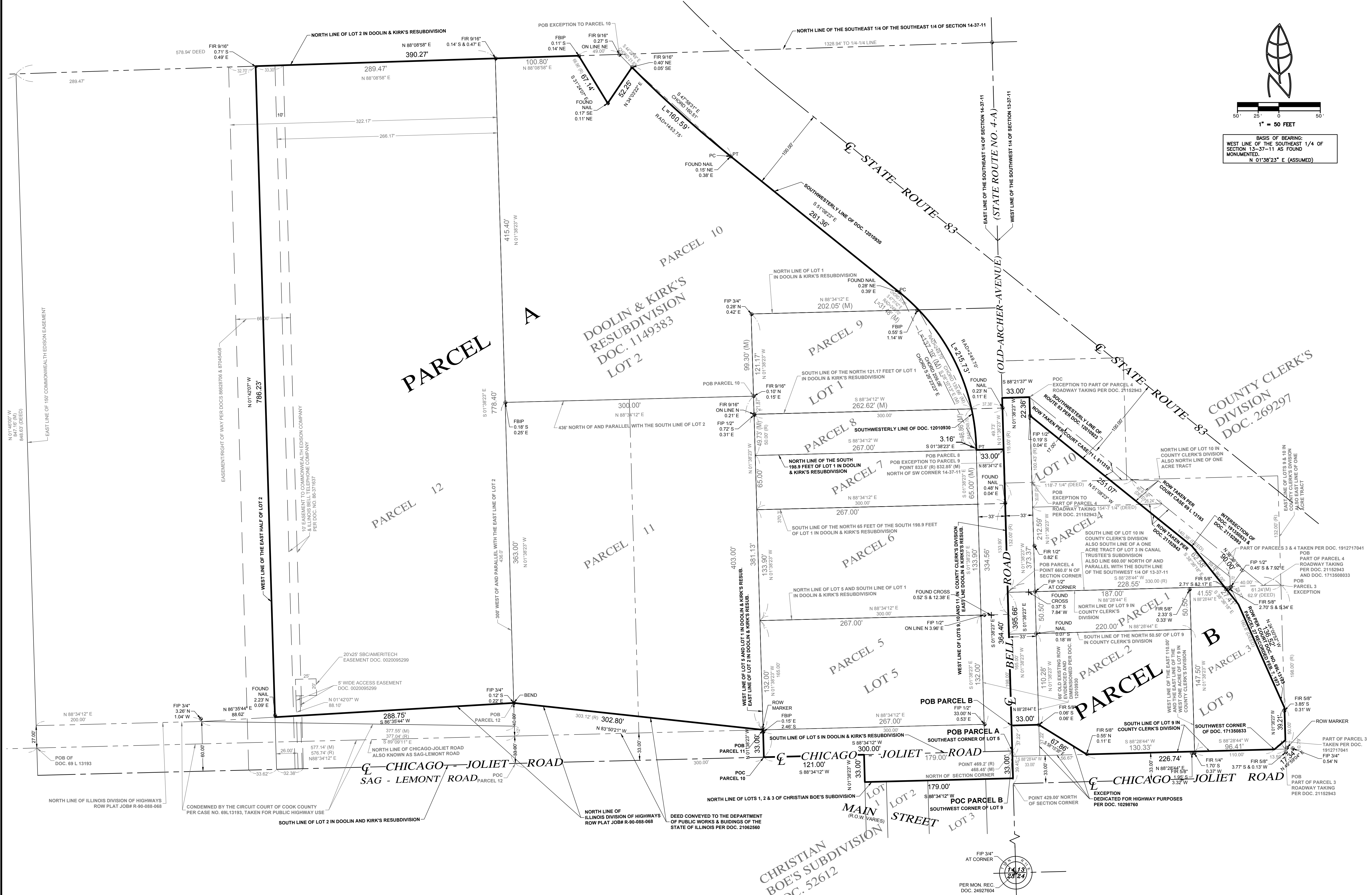


ALTA/NSPS LAND TITLE SURVEY



BASIS OF BEARING:
WEST LINE OF THE SOUTHEAST 1/4 OF
SECTION 13-37-11 AS FOUND
MONUMENTED.
N 01°38'23" E (ASSUMED)



DATE	REVISION
10/21/2019	FIRST REVIEW
10/23/2019	REVISE BOUNDARY

ALTA/NSPS LAND TITLE SURVEY
NORTHWEST CORNER OF RTE 83 & MAIN STREET
LEMONT, ILLINOIS

Morris Engineering, Inc.
Civil Engineering • Consulting
Land Surveying
515 Warrville Road, Lisle, IL 60532
Phone: (630) 271-0770
Survey: (630) 271-0599
FAX: (630) 271-0774
Website: www.mechil.com



FIELD CREW:	PW
DRAWN BY:	CJS
CHECKED BY:	TC
APPROVED BY:	TC
DATE:	10/18/2019
SCALE:	HORIZ 1"=50' VERT NONE
SHEET	2
OF 2 SHEETS	
PROJ #	19-07-2000